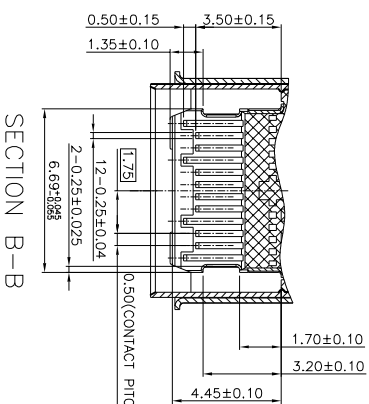
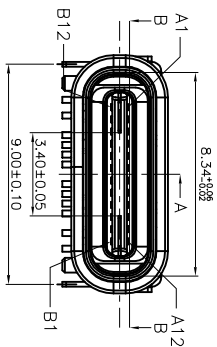


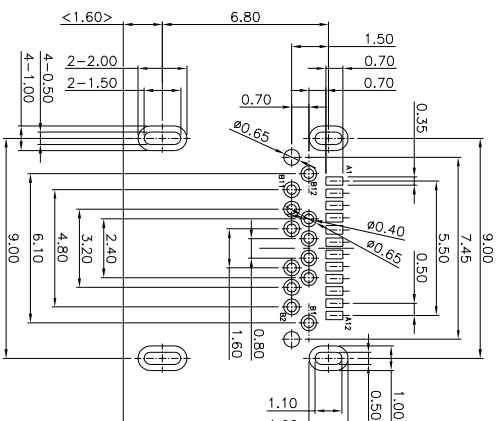
Pin	Signal Name	Mating Sequence	Pin	Signal Name	Mating Sequence
A1	GND	First	B12	GND	First
A2	SSTXp1	Second	B11	SSRXp1	First
A3	SSTXn1	Second	B10	SSRXn1	Second
A4	V <sub>BS</sub>	First	B9	V <sub>BS</sub>	First
A5	CC1	Second	B8	SBU2	Second
A6	Dp1	Second	B7	Dn2	Second
A7	Dn1	Second	B6	Dp2	Second
A8	SBU1	Second	B5	CC2	Second
A9	V <sub>BS</sub>	First	B4	V <sub>BS</sub>	First
A10	SSRXp2	First	B3	SSTXn2	Second
A11	SSRXp2	Second	B2	SSTXp2	Second
A12	GND	First	B1	GND	First
SHELL			SHELL		
		GND			GND



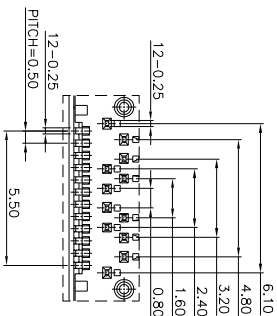
SECTION A-A



SECTION B-B



RECOMMEND PCB LAYOUT COMPONENT SIDE  
TOLERANCE FOR PCB LAYOUT IS ±0.05  
KEEP OUT AREA



- NOTE:
- 1.1 MATERIAL: HIGH TEMPERATURE PLASTIC UL 94 V-0;
  - 1.2 CONTACT: COPPER ALLOY(T=0.15mm)
  - 1.3 SHELL: STAINLESS STEEL(T=0.20mm)
  2. ELECTRICAL CHARACTERISTICS:
    - 2.1 CONTACT RESISTANCE: 40mΩ Max FOR INITIAL, 10mΩ CHANGE AFTER TEST. MEASURE AT 20mv, 100mA.
    - 2.2 CONTACT CURRENT RATING: 5A FOR COLLECTIVELY POWER SUPPLY PIN(PIN1, A4, A9, A12, B1, B4, B9, B12); 1.25A FOR V<sub>BS</sub> PIN; 0.25A FOR OTHER SIGNAL PIN.
    - 2.3 DIELECTRIC WITHSTANDING VOLTAGE: 100V AC R.M.S.
    - 2.4 INSULATION RESISTANCE 100MΩ Min
    - 2.5 OPERATING TEMPERATURE: -40°C ~ 85°C
  3. MECHANICAL CHARACTERISTICS:
    - 3.1 MATING FORCE: 5~20 N.
    - 3.2 UNMATED FORCE: 6~20N AFTER TEST
    - 3.3 DURABILITY: 10,000 CYCLES
  4. PLATING
    - 4.1 TERMINAL CONTACT: (SEE TAB) GOLD PLATING ALL OVER 50u" Min NICKEL AND 80u" Min Tin ALL OVER 50u" Min NICKEL ON SOLDER AREA
    - 4.2 OUT SHELL: 50u" Min. NICKEL ALL OVER
    - 4.3 INNER SHELL: DEGREASE

UNITS: mm	<b>CSCONN</b>		CSCONN PRECISE ELECTRONICS CO., LTD	
GENERAL TOLERANCE	PART NO. (INTENDED USE)	TITLE:	USB TYPE C FEMALE SMT防水	
X. ±5° 0.X±0.25	CUS31241065002	DWG NO.	USB	
X.1 ±2° 0.XX±0.2	APPD:	SCALE	SHEET	REV
XX. ±1° 0.XXX±0.1	CHKD: Skilla	1:1	1 OF 1	A
	DR: Kitty			