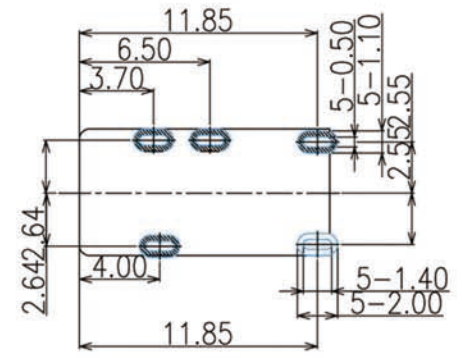
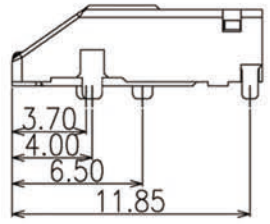
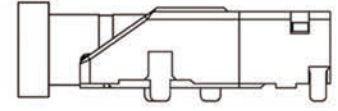
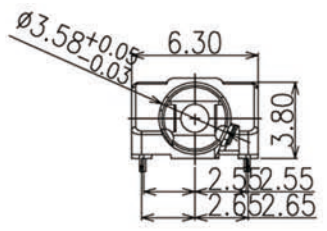


3D VIEW

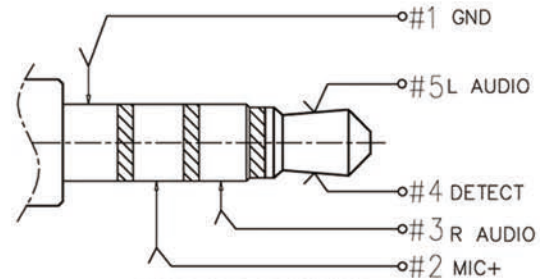
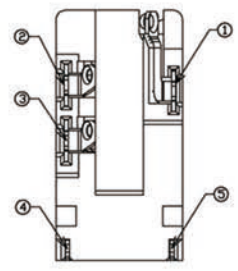


RECOMMEND FPC LAYOUT
TOLERANCE :±0.05



PLUG MATE DRAWING

- NOTES:
- CONTACT CURRENT RATING: 1A.
 - CONTACT RESISTANCE: 50 mΩ MAX.;
 - INSULATION RESISTANCE: 1000Ω MIN.;
 - DIELECTRIC WITHSTANDING: 500V AC MIN.;
 - DURABILITY: 5,000 CYCLES MIN.;
 - CONNECTOR MATING FORCES: 29.4N (3.00Kgf) MAX.;
 - CONNECTOR UNMATING FORCES: 2.94N(0.30Kgf) MIN.;
 - PRODUCT MEET THE REQUEST OF THE RoHS, SEE TABLE A:



MALE PLUG SCHEMATIC

ITEM	PART NAME	Q'TY	MATERIAL	REMARK
⑤	HOUSING	1	PART COLOR BLACK	
④	CONTACT 4#	1	STAINLESS STEEL; NICKEL(40μMIN.) UNDER PLATING OVERALL;GOLD FLASH PLATING ON SOLDER AREA ;GOLD FLASH PLATING ON CONTACT AREA	T=0.2
③	CONTACT 3#	1	STAINLESS STEEL; NICKEL(40μMIN.) UNDER PLATING OVERALL;GOLD FLASH PLATING ON SOLDER AREA ;GOLD FLASH PLATING ON CONTACT AREA	T=0.2
②	CONTACT 2#	1	PHORPHOS BRONZE; NICKEL(40μMIN.) UNDER PLATING OVERALL;GOLD FLASH PLATING ON SOLDER AREA ;GOLD FLASH PLATING ON CONTACT AREA	T=0.2
①	CONTACT 1#	1	PHORPHOS BRONZE; NICKEL(40μMIN.) UNDER PLATING OVERALL;GOLD FLASH PLATING ON SOLDER AREA ;GOLD FLASH PLATING ON CONTACT AREA	T=0.2

UNITS:		CSCONN		CSCONN PRECISE ELECTRONICS CO.,LTD		
GENERAL TOLERANCE		PART NO.(INTENDED USE)		TITLE: PHONE JACK		
X. ° ±5°		CPJ353840		DWG NO. JACK		
X. 1±2°		APPD:		SCALE SHEET REV 1:1 1 OF 1 A		
XX. ±1°		CHKD: Skila				
		DR: Kitty				