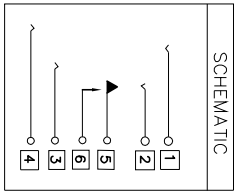
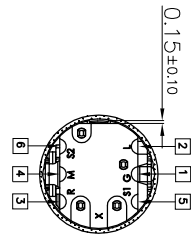
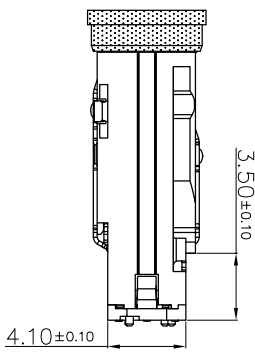
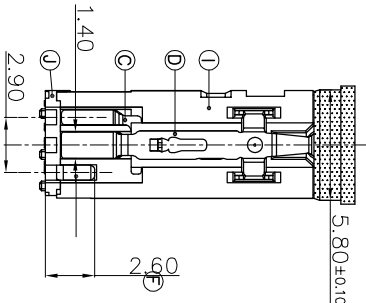
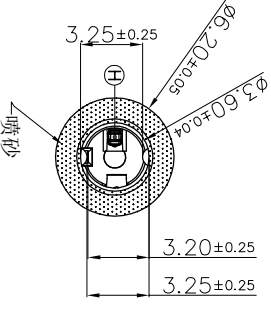
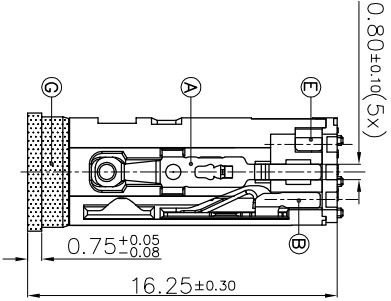


Matching Plug



**SPECIFICATION:**  
 1. Electrical characteristics  
 1-1. Current rating: DC 0.5A max.  
 1-2. Voltage rating: DC 30V.  
 1-3. Contact resistance: 50m Ω max.  
 1-4. Insulation resistance:  
 100M Ω min. at 500V DC.  
 1-5. Withstanding voltage:  
 500V AC for 1 minute.  
 2. Mechanical characteristics  
 2-1. Life test: 5000 cycles min,  
 2-2. Mating force: 3~30N.  
 3. Salt spray test time: 24 hours min.

UNITS: mm					
GENERAL TOLERANCE					
X. ° ±5°	0. X ±0.25				
X. 1 ±2°	0. XX ±0.2				
XX. ±1°	0. XXX ±0.1				
PART NO. (INTENDED USE)		TITLE: PHONE JACK			
CPJ3040		DWG NO. JACK			
APPD: Skilla		SCALE	SHEET	REV	
CHKD: Kitty		1:1	1 OF 1	A	
DR: Kitty					
CSCONN PRECISE ELECTRONICS CO.,LTD					

NO.	DESCRIPTION	QTY	MATERIAL	REMARK
①	Cover	1	PA107 JL94 V-0	White/Black
②	Housing	1	PA107 JL94 V-0	White/Black
③	Insulator	1	PA66UL94 V-0	White/Black
④	Ring	1	C3604	Nickel Plated
⑤	Shunt terminal	1	Phosphor bronze(CS210-EN)10.20	
⑥	Transfer spring	1	Titanium copper(YeU-SH)10.15	Gold finish on contact area;
⑦	Earth spring	1	Phosphor bronze(CS19R-4H)10.20	and solder preg;
⑧	Ring spring	1	Phosphor bronze(CS210-EN)10.20	all over nickel plated.
⑨	Tip spring	1	Phosphor bronze(CS210-EN)10.20	
⑩	Ring spring	1	Phosphor bronze(CS19R-4H)10.20	