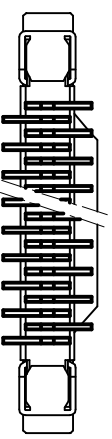
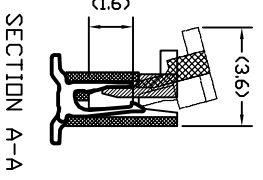
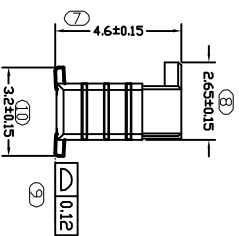
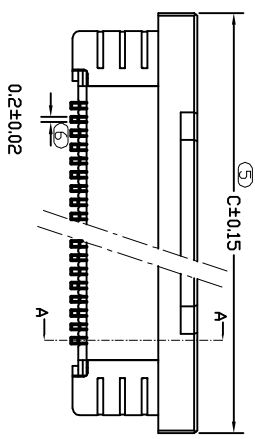
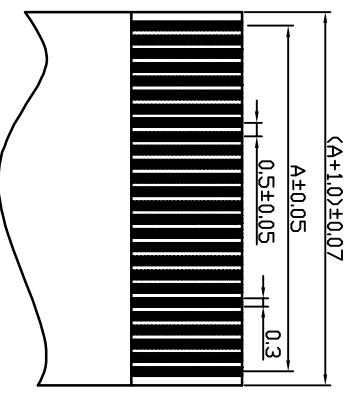


RECOMMENDED PCB LAYOUT



SPECIFICATION
 1. Material:
 Housing: HIGH-TEMP Plastic, UL94V-0, color: Natural.
 Lock: HIGH-TEMP Plastic, UL94V-0, color: black.
 Contacts: Copper alloy.
 Solder tab: Copper alloy.
 2. Electrical Characteristics:
 Current rating: 0.5A(max).
 Voltage rating: 50V(max).
 Operating Temperature: -25°C~+85°C.
 Insulation resistance: 500M ohms min. at 500V DC
 Dielectric withstanding voltage: 500V AC/minute.
 Contact resistance: 30m ohms max.

Pin#	A	B	C	Pin#	A	B	C
4	1.5	2.56	8.2	33	16	17.06	22.7
5	2	3.06	8.7	34	16.5	17.56	23.2
6	2.5	3.56	9.2	35	17	18.06	23.7
7	3	4.06	9.7	36	17.5	18.56	24.2
8	3.5	4.56	10.2	37	18	19.06	24.7
9	4	5.06	10.7	38	18.5	19.56	25.2
10	4.5	5.56	11.2	39	19	20.06	25.7
11	5	6.06	11.7	40	19.5	20.56	26.2
12	5.5	6.56	12.2	41	20	21.06	26.7
13	6	7.06	12.7	42	20.5	21.56	27.2
14	6.5	7.56	13.2	43	21	22.06	27.7
15	7	8.06	13.7	44	21.5	22.56	28.2
16	7.5	8.56	14.2	45	22	23.06	28.7
17	8	9.06	14.7	46	22.5	23.56	29.2
18	8.5	9.56	15.2	47	23	24.06	29.7
19	9	10.06	15.7	48	23.5	24.56	30.2
20	9.5	10.56	16.2	49	24	25.06	30.7
21	10	11.06	16.7	50	24.5	25.56	31.2
22	10.5	11.56	17.2	51	25	26.06	31.7
23	11	12.06	17.7	52	25.5	26.56	32.2
24	11.5	12.56	18.2	53	26	27.06	32.7
25	12	13.06	18.7	54	26.5	27.56	33.2
26	12.5	13.56	19.2	55	27	28.06	33.7
27	13	14.06	19.7	56	27.5	28.56	34.2
28	13.5	14.56	20.2	57	28	29.06	34.7
29	14	15.06	20.7	58	28.5	29.56	35.2
30	14.5	15.56	21.2	59	29	30.06	35.7
31	15	16.06	21.7	60	29.5	30.56	36.2
32	15.5	16.56	22.2				



APPLICABLE FPC

UNITS: mm		CSCONN		CSCONN PRECISE ELECTRONICS CO.,LTD	
GENERAL TOLERANCE					
X. ° ±5°	0. X ±0.25	PART NO. (INTENDED USE)		TITLE:	
X. 1 ±2°	0. XX ±0.2	CFP05XXX3015		FPC 0.5MM XP 立貼	
XX. ±1°	0. XXX ±0.1	APPD:		DWG NO.	
		CHKD: Skilla		FPC	
		DR: Kitty		SCALE	
				1:1	
				SHEET	
				1 OF 1	
				REV	
				A	