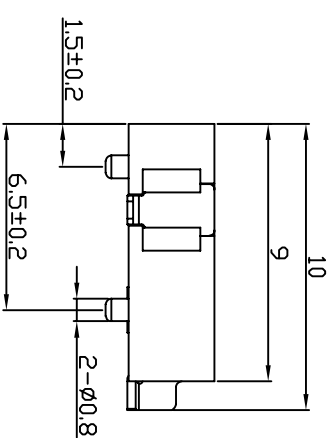
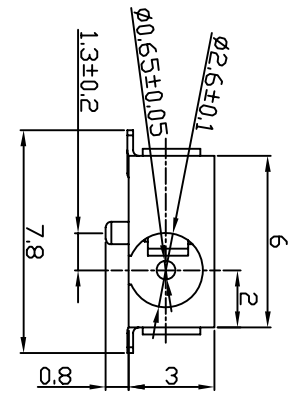
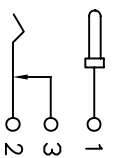


PCB LAYOUT TOP VIEW



No.	PART NAME	QTY	MATERIAL (THICK, COLOR)	REMARK
①	HOUSING PH-DC-0511-1.6	1	PA-9T (Black)	
②	TERMINAL MT-DC-0511-40.S	2	BRASS t=0.20	Ag-Plated
③	TERMINAL MT-DC-0511-80.S	1	BRASS t=0.20	Ag-Plated
④	TERMINAL MT-DC-0511-20.S	1	PHOSPHOR BRONZE t=0.20	Ag-Plated
⑤	TERMINAL MT-DC-0511-07.Q.S	1	IN62	Ag-Plated

- SPECIFICATION**
1. Rating : DC 50V 0.5A;
 2. Contact resistance: $\leq 0.03\Omega$;
 3. Insulation resistance: $\geq 100M\Omega$ (DC250V)
 4. Withstand voltage: 500VAC ;
 5. Insertion and extraction force: 3-15N;
 6. Life test: 5,000 cycles.



CIRCUIT DIAGRAM

UNITS:		CSCONN	
GENERAL	TOLERANCE	PART NO.(INTENDED USE)	TITLE:
X. ° ±5°	0.X±0.3	CDC0511	DC JACK
X.1±2°	0.XX±0.2	APPD:	DWG NO.
XX ±1°	0.XXX±0.1	CHKD: Skilla	JACK
XXX ±0.5°		DR: Kitty	SCALE
			1:1
			SHEET
			1 OF 1
			REV
			A

