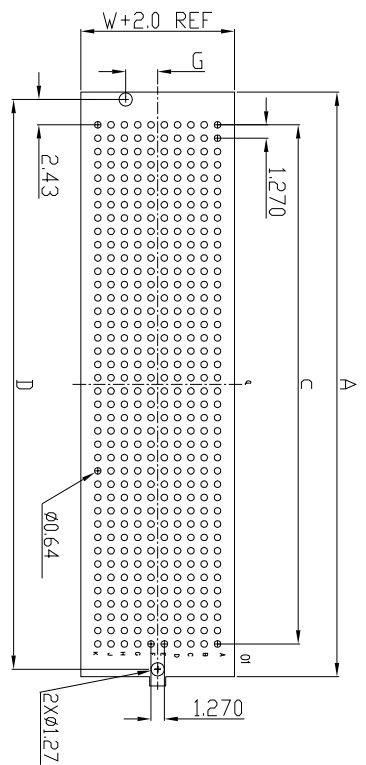


- SPECIFICATIONS**
1. CURRENT RATING: 1.0A
 2. VOLTAGE RATING: 240VAC
 3. OPERATING TEMPERATURE RANGE: -55°C TO +125°C
 4. OPERATING HUMIDITY RANGE: 90% TO 95%
 5. WITHSTANDING VOLTAGE: 700V AC/MINUTE.
 6. PART NO DESCRIPTION:
CBT-127YXXXXM-XX



Recommended PC board pattern
(TOP VIEW)

TABLE 2

ROWS	W	G
04	7.06	2.01
05 OR 06	9.60	3.05
08	12.14	3.05
10	14.68	3.05
12	17.22	3.05
14	19.76	3.05

TABLE 1

HEIGHT	H1
1	4.72
2	5.72
3	6.22
4	8.23
5	9.27
6	9.70
7	11.71
8	13.72

TABLE 5 STACK HEIGHT

	5.05	6.05	6.55	7.54
4.72	7.00	8.00	8.50	9.50
5.72	8.00	9.00	9.50	10.50
6.22	8.50	9.50	10.00	11.00
8.23	NA	NA	12.00	NA
9.27	11.50	12.50	13.00	14.00
9.70	12.00	13.00	13.50	14.50
11.71	14.00	15.00	15.50	16.50
13.72	16.00	17.00	17.50	18.50

TABLE 4

POSITION	COPLANARITY
10 PIN	0.15
30 PIN	0.20
40 PIN	0.23
50 PIN	0.23

TABLE 3

NO. OF ROWS	A	B	C	D
10	17.68	15.80	11.43	16.28
15	24.03	22.15	17.78	22.63
19	29.11	27.23	22.86	27.71
20	30.38	28.50	24.13	28.98
25	36.73	34.85	30.13	35.33
30	43.08	41.20	36.83	41.68
40	55.78	53.20	49.53	54.38
50	68.48	66.60	62.23	67.08

UNITS: mm

GENERAL TOLERANCES

X. ± 5° 0. X ± 0.25

X. 1 ± 0.2 0. X ± 0.2

XX. ± 1° 0. XXX ± 0.1

CSCCONN

PART NO. (INTENDED USE)
CBT-127YXXXXM-XX

APPD:
SK:11a

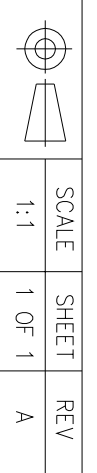
CHKD:
SK:11a

DR:
Kitty

CSCCONN PRECISE ELECTRONICS CO., LTD

TITLE: BTB 1.27MM XP MALE H=XXMM

DWG NO. BTB



SCALE SHEET REV
1:1 1 OF 1 A