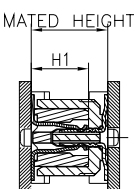
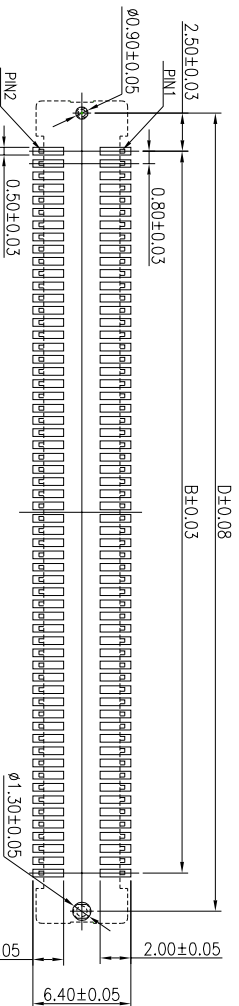
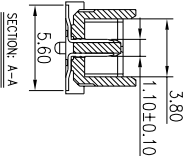
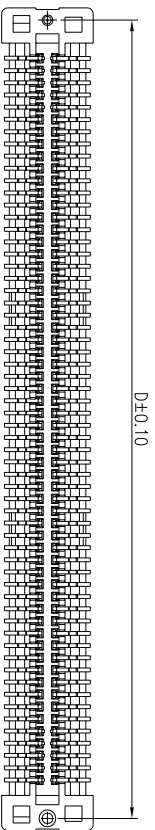
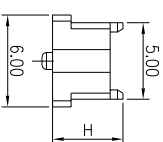
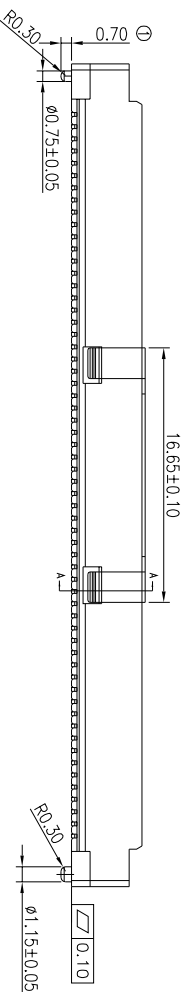


3D VIEW



No of contacts	MATED HEIGHT					
	A	B	C	D	E	F
40	21.80	15.20	16.80	20.20	18.86	20.21
50	25.80	19.20	20.80	24.20	22.86	24.21
60	29.80	23.20	24.80	28.20	26.86	28.21
80	37.80	31.20	32.80	36.20	34.86	36.21
100	45.80	39.20	40.80	44.20	42.86	44.21
120	53.80	47.20	48.80	52.20	50.86	52.21
140	61.80	55.20	46.80	60.20	58.86	60.21
160	69.80	63.20	64.80	68.20	66.86	68.21
180	77.80	71.20	72.80	76.20	74.86	76.21
200	85.80	79.20	80.80	84.20	82.86	84.21

NOTES:
 MATERIAL:
 HOUSING: THERMO-PLASTIC. UL 94V-0 NATURE.
 CONTACT: PHOSPHOR BRONZE.
 CAP: BRASS

SPECIFICATION:
 CURRENT RATING: 0.5A 30V AC/DC.
 CONTACT RESISTANCE: 50mΩ MAX.
 INSULATION RESISTANCE: 500MΩ MIN AT 500V DC.
 OPERATING TEMPERATURE RANGE: -25°C TO +85°C

PART NO. DESCRIPTION:
 CBT-0812XXM-XX

MATING HEIGHT
 50=5.0MM MATING HEIGHT
 NUMBER OF POSITIONS

RECOMMENDED P.C BOARD LAYOUT

UNITS: mm	
GENERAL TOLERANCES	
X ± 0.5°	0. X ± 0.25
X ± 2°	0. XX ± 0.2
X ± 1°	0. XXX ± 0.1

CSCONN
 PART NO. (INTENDED USE)
 CBT-0812XXM-XX

CSCONN PRECISE ELECTRONICS CO., LTD

APPD:
 CHKD:
 DR:

TITLE:
 DWG NO.

Skila
 Kitly

BTB
 BTB
 BTB



SCALE SHEET REV
 1:1 1 OF 1 A

1 2 3 4 5 6 7 8